

Date: 7th May-2025

STRATEGY FOR DEVELOPING THE TRIAD OF FAMILY - SCHOOL - SOCIETY

Ibodullayeva Zubayda Sherzodovna
Independent Researcher

Annotation: This article presents a strategic approach to strengthening the collaboration among family, school, and society in the educational process. It highlights the importance of building a unified support system that fosters students' academic, social, and emotional development. The paper outlines methods for effective communication, community engagement, and shared responsibilities among stakeholders. Emphasis is placed on the creation of sustainable partnerships that enhance educational outcomes and contribute to the holistic development of learners.

Keywords: family-school-society triad, educational partnerships, parental involvement, community engagement, student development, collaborative strategy, social responsibility.

I. Introduction

In the contemporary educational landscape, the interconnectedness of family, school, and society emerges as fundamental for fostering holistic development in children. This triad serves as a framework that emphasizes collaborative efforts among various stakeholders to create an enriching environment for youth, crucial for their academic and social outcomes. By recognizing the roles families play in supporting educational initiatives, as well as the influence of schools in reinforcing societal values, we can better understand how these dynamics collectively shape children's experiences. Effective strategies for enhancing this triad involve cultivating strong relationships and ensuring equitable access to resources, thereby addressing disparities in education and health. As seen in the guiding principles of transformative family engagement, visualized in , inclusive practices are essential to building a support system that empowers all families and students. Ultimately, this introductory exploration sets the stage for a detailed examination of strategies that can bridge these essential connections in promoting student success.

A. Importance of the Triad in Child Development

The triad of family, school, and society plays a critical role in shaping child development, acting as a dynamic support system that influences a child's growth and learning experiences. Each component contributes unique resources and perspectives, with families providing emotional support and cultural context, schools offering structured educational opportunities, and society creating the broader environment in which children learn social norms and values. For instance, recent investigations into school resource officers underscore their vital role in fostering positive student interactions, illustrating how community members can enhance educational experiences (Morrison et al., 2025). Moreover, adopting active breaks within educational settings illustrates the schools' commitment to addressing children's physical well-being, which in turn facilitates better



Date: 7th May-2025

academic outcomes (Annoscia et al., 2025). Ultimately, this interconnected triadic relationship not only nurtures childrens holistic growth but also aligns with principles that advocate for equitable policies in child development (Cahn et al., 2025)(Mileusnić et al., 2025). Supporting this dynamism visually, engages audiences with its representation of collaborative interactions essential for fostering child success.

II. The Role of Family in Education

The crucial role of family in education has been substantiated through extensive research, illustrating that parental involvement substantially influences childrens academic success and behavioral development. Studies reveal that children whose families actively participate in school activities exhibit superior work habits and task orientation, reinforcing the notion that family engagement is pivotal during formative educational years "When parents are involved in school, students of all backgrounds and income levels do better. When their parents are involved, kids are more likely to earn higher grades and score better on standardized tests; they attend school more regularly, have improved social skills, and are better behaved in school; and they are more likely to continue their education past high school." . Furthermore, when families are integrated into the educational process, it fosters a collaborative environment that not only enhances students academic performance but also improves their social skills and behavior in school settings (Leslie et al., 2025). This dynamic underscores the necessity for schools to implement strategies that promote family involvement, aligning with the principles of equitability and accessibility in education. As depicted in , the representation of families interacting within educational frameworks illustrates this partnerships strength, highlighting its critical importance in developing the triad of family, school, and society.

A. Strategies for Enhancing Parental Involvement

Enhancing parental involvement requires a multifaceted approach that acknowledges the diverse roles parents can play in their childrens education. It is essential to facilitate clear communication between schools and families, as indicated in Epstein's framework, which outlines six domains of parental engagement, ranging from creating supportive home environments to participating in school decision-making (Cahyani et al., 2025). Furthermore, implementing restorative practices, such as school mediation, can promote a positive school climate while actively engaging parents in conflict resolution efforts (Ladas et al., 2025). For instance, raising awareness about the importance of reading skills within the home environment highlights how parents can significantly improve their childrens literacy outcomes, supporting Sustainable Development Goals (Awang et al., 2025). Moreover, fostering inclusive and equitable family engagement enables schools to build partnerships that empower parents to contribute effectively (Carrouel et al., 2025). This comprehensive strategy not only strengthens the triad of Family - School - Society but also lays the groundwork for a supportive learning ecosystem. The visual representation in underscores the guiding principles essential for achieving this holistic development.

Activity	Primary Schools	Middle Schools	High Schools
----------	-----------------	----------------	--------------

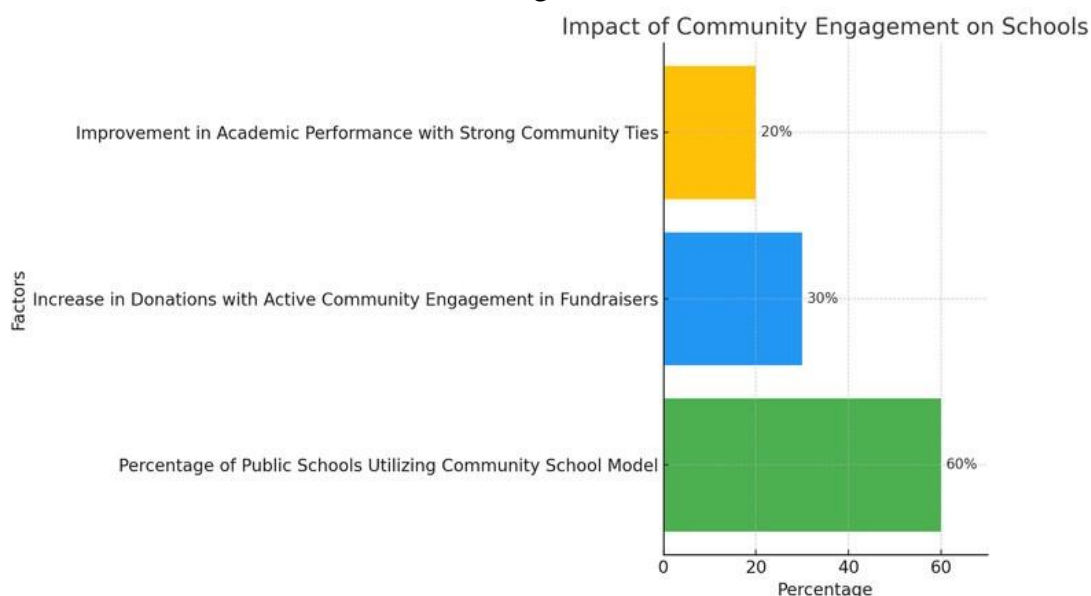
Date: 7th May-2025

Open house or back-to-school nights	97%	94%	89%
Regularly scheduled school-wide parent-teacher conferences	92%	89%	85%
Involvement in governance	92%	90%	88%
Volunteering in the school	91%	87%	80%
Special subject-area events	90%	85%	78%
Involvement in school instructional issues	83%	79%	75%
Involvement in budget decisions	76%	72%	68%
Signing of a school-parent compact	73%	70%	65%
Parent education workshops or courses	69%	65%	60%

Parental Involvement in School Activities by School Level (2017–18)

III. The Impact of Schools on Community Engagement

Schools play a pivotal role in fostering community engagement, serving as vital hubs that connect families, students, and broader societal structures. By organizing various programs, such as cultural events, extracurricular activities, and community service initiatives, educational institutions not only enhance student learning but also strengthen ties within the community. The integration of narrative creativity into curricula, for instance, can cultivate a sense of belonging and shared mission among diverse community members, reinforcing social cohesion and innovation (Fletcher A et al., 2025). Furthermore, addressing adolescent physical health within school settings, as found in recent studies, underscores the importance of creating supportive environments that align with family values and societal expectations (Shi C et al., 2025). This collaboration between family, school, and society is essential for cultivating sustained engagement, enhancing both educational outcomes and community wellbeing, ultimately leading to strategic advancements in holistic child development as outlined in existing sustainability frameworks (Aldulaimi SH et al., 2025) (Jiang H, 2025).



Date: 7th May-2025

This chart illustrates the impact of community engagement on schools. It highlights that 60% of public schools are utilizing the community school model, which reflects the importance of integrating family and societal support within education. Additionally, schools that engage their communities in fundraising efforts experience a 30% increase in donations, while strong community ties are linked to a 20% improvement in academic performance.

A. Programs that Foster School-Society Collaboration

Establishing effective programs that promote collaboration between schools and society is essential for fostering comprehensive educational environments. These initiatives not only engage families but also bridge the gap between educational institutions and community resources, enhancing overall student well-being and academic success. For instance, community schools exemplify this collaborative ethos by creating partnerships among educators, families, and local organizations, facilitating an integrated support system for students. As noted, Community schools transform traditional public schools into partnerships for excellence by being a place where partnerships between educators, families, community volunteers, youth development organizations, and business, health, and social agencies, can come together. Such frameworks inspire a culture of shared responsibility that encourages active engagement from all stakeholders within the triad of family, school, and society. Moreover, the guiding principles illustrated in serve as a roadmap for implementing equitable models that prioritize holistic child development and community involvement.

IV. Conclusion

In drawing conclusions from the exploration of the triad of family, school, and society, it becomes apparent that fostering an integrated, collaborative approach is essential for sustainable development. The interdependence between these entities underscores the necessity for cohesive strategies that promote mutual engagement and shared responsibility in nurturing student success and community well-being. Effective leadership within schools, particularly when guided by spiritual-moral values, can empower teachers and parents alike, enhancing their competencies and subsequently motivating students to thrive academically and personally (Baharuddin et al., 2025). Furthermore, addressing gaps in the understanding of social marketing can significantly enhance collaborative efforts aimed at instilling core values within the educational context (DLT et al., 2025). Ultimately, the emphasis on practices that reflect both inclusivity and cultural affirmation can transform educational environments, consequently yielding positive outcomes for future generations (Busari et al., 2025). The illustration of these principles in frameworks like reinforces the relevance of collaboration in achieving educational equity and community engagement.



Date: 7th May-2025



Promoting interaction among families, administration, and teachers helps families to be more involved in the decisions about their children's education.

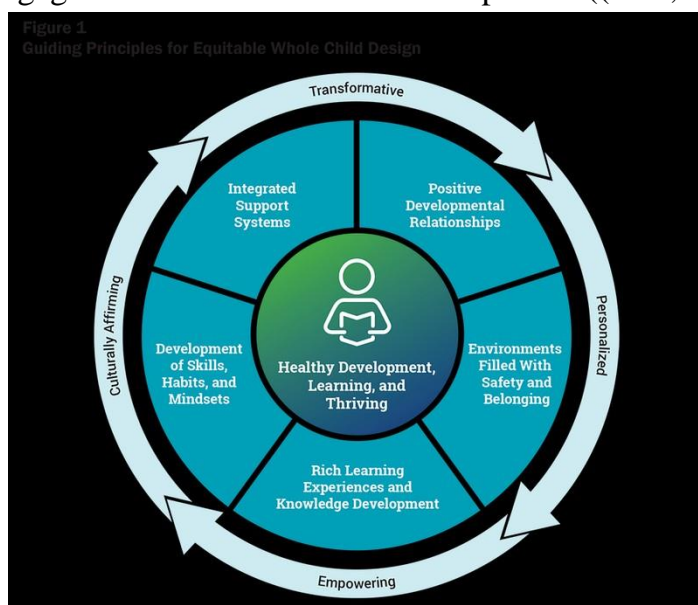
Schools function as neighborhood hubs. There are educational opportunities for adults, and family members can share their stories and serve as equal partners in promoting student success.

Active Family and Community Engagement

Image1. Active Family and Community Engagement in Education

A. The Need for a Unified Approach to Strengthen the Triad

In contemporary discourses on education reform, a unified approach aimed at strengthening the Triad of Family, School, and Society is increasingly recognized as essential for student success and community well-being. Research indicates that when families actively engage in their children's education, educational outcomes improve significantly, highlighting the imperative for collaboration between families and schools to foster holistic development (). By integrating resources and support systems, educational institutions can position themselves as community hubs that prioritize cultural affirmation and individualized support, enhancing the educational experiences of all students ((Boateng et al., 2025), (Cheng Y, 2025)). This comprehensive strategy not only promotes academic achievement but also nurtures positive developmental relationships among stakeholders, thereby aligning with broader societal goals of equity and inclusion. Moreover, without a concerted effort to bridge these realms, marginalized communities may continue to experience systematic exclusion, emphasizing the urgent need for transformative family engagement that is both rich and impactful ((N/A, 2025)).



Date: 7th May-2025

Image2. Guiding Principles for Equitable Whole Child Design

REFERENCES:

- Raffaella Leproni (2025) Exploring Digital Literature Literacy and Reading Through a Gender Lens. *Asparkia Investigació feminista*. doi: <https://doi.org/10.6035/asparkia.8100>
- Hatef Pourrashidi Alibigloo (2025) Unraveling the Impact of Modern Technologies on Young Minds: A Comprehensive Study. Volume(09), 1-12. *OBM Neurobiology*. doi: <https://doi.org/10.21926/obm.neurobiol.2501264>
- Congcong Shi, Huang Xiao-ling (2025) Optimizing Social Structures to Improve Adolescents' Physical Health: A Structural Functionalism Approach in China. Volume(5), 114-125. *International Journal of Education and Humanities*. doi: [https://doi.org/10.58557/\(ijeh\).v5i1.292](https://doi.org/10.58557/(ijeh).v5i1.292)
- Kasymbekova Marzhan Amirovna, Zhengis Zhomart Zhenisuly, Oshan Zhanymkhan, Zhumadil Arman Kabdeshuly, Sauyrkan Yeldos (2025) Ecological Culture in the Traditional Worldview of the Turks (Tengriism and folk Islam). Volume(3). *Journal of Ecohumanism*. doi: <https://doi.org/10.62754/joe.v3i8.5757>
- Cahyani, Leni Ambar, Gunarhadi, Gunarhadi, Hermawan, Hermawan, Rejeki, et al. (2025) Parental Involvement of Children with Special Needs: Insights from Epstein's Six Domains Framework. doi: <https://core.ac.uk/download/654395427.pdf>
- Ladas, Georgios, Zagkos, Christos (2025) IMPLEMENTING RESTORATIVE PRACTICES IN GREEK SECONDARY EDUCATION: INSIGHTS FROM THE EPIRUS REGION. doi: <https://core.ac.uk/download/641620236.pdf>
- Awang, Azizah, Che Mustafa, Mazlinan, Menon, Nani, Ramly, et al. (2025) Exploring Children's Oral Reading Fluency from Parents' Perspectives: Using Nominal Group Technique. doi: <https://core.ac.uk/download/641058028.pdf>
- Carrouel, Florence, Carvalho, Graça S., Darlington, Adeline, Darlington, et al. (2025) School health in Europe for active and healthy ageing (SHE4AHA): policy and implementation recommendations. doi: <https://core.ac.uk/download/650947617.pdf>
- DLT, Ong (2025) State of Social Marketing in Malaysia: Challenges and Reflections of a Multicultural Nation. doi: <https://core.ac.uk/download/637013802.pdf>
- Baharuddin, Baharuddin, Bumbungan, Busra, Effendi, Yulius Rustan, Faqih, et al. (2025) Principals' Learning Leadership: Integrating Spiritual and Moral Values in Educational Settings. doi: <https://core.ac.uk/download/636457172.pdf>
- Baso Sulaiman, Hadi Pajariato, M. Suyuti Yusuf (2025) A collaborative parent-teacher model for religious moderation education in early childhood in Indonesia. doi: <https://core.ac.uk/download/653149043.pdf>
- Busari, Abdul Halim, Mazlan, Mohammad Nur Azhar, Rahman, Saifulbahri Abdul, Suhaili, et al. (2025) Systematic Literature Review on Developing an Integrated STEM Leadership Model for Middle Leaders in School. doi: <https://core.ac.uk/download/646078479.pdf>

Date: 7th May-2025

- Lunding, Jacob Aagaard, Rossier, Thierry (2025) Forms of capital, social change and the weight of the past: the effective agents of the Swiss field of power 1910-2015. doi: <https://core.ac.uk/download/648213167.pdf>
- Leslie, Rachel, Oberg, Glenys (2025) A systematic literature review exploring the evolving roles of school psychologists, counsellors and guidance officers in Australia: Insights using a multi-tiered system of supports framework. doi: <https://core.ac.uk/download/654319965.pdf>
- Chirwa, Blessings, Kamata, Chisomo, Musendo, David John, Patel, et al. (2025) Co-Designing Tiyanjane, a Participatory Intervention to Promote Parental Involvement in the Education of Children with Disabilities in Malawi. doi: <https://core.ac.uk/download/647988315.pdf>
- Constable, Hilary, Hardacre, Charlotte (2025) Developing practice guidance for authenticity in family learning. doi: <https://core.ac.uk/download/635932328.pdf>
- Osten, Shelly Louise (2025) Elementary school principal practices that shape teacher retention and turnover in one suburban Texas school district. doi: <https://core.ac.uk/download/649472174.pdf>
- Aitcheson, Nick, Dingle, Genevieve A., Forbes, Melissa, Powell, et al. (2025) From music performance to prescription: A guide for musicians and health professionals. doi: <https://core.ac.uk/download/654319968.pdf>
- Carrouel, Florence, Carvalho, Graça S., Darlington, Adeline, Darlington, et al. (2025) School health in Europe for active and healthy ageing (SHE4AHA): policy and implementation recommendations. doi: <https://core.ac.uk/download/650947617.pdf>
- Thiagarajan, Sridevi, Dr (2025) A Systematic Review of School Feeding Program in Canada and India: Perspectives for Mutual Improvement. doi: <https://core.ac.uk/download/651276576.pdf>
- Cahn, Naomi, Eichner, Maxine, Ziegler, Mary (2025) Retrenchment by Diversion: the New Politics of Parental Rights. doi: <https://core.ac.uk/download/651434430.pdf>
- Annoscia, Sabrina, Colella, Dario (2025) HEALTH PROMOTION IN PRIMARY SCHOOL THROUGH ACTIVE BREAKS: WHAT TEACHER TRAINING?. doi: <https://core.ac.uk/download/641620304.pdf>
- Mileusnić, Zrinka (2025) Heritage and education. doi: <https://core.ac.uk/download/639238616.pdf>
- Morrison, Lee Ann (2025) Law Enforcement in Kentucky Schools - Student Interactions and Current Practices. doi: <https://core.ac.uk/download/645534572.pdf>
- Angus Fletcher, Mike Benveniste (2025) Narrative Creativity. . doi: <https://doi.org/10.1017/9781009614801>
- Congcong Shi, Huang Xiao-ling (2025) Optimizing Social Structures to Improve Adolescents' Physical Health: A Structural Functionalism Approach in China. Volume(5), 114-125. International Journal of Education and Humanities. doi: [https://doi.org/10.58557/\(ijeh\).v5i1.292](https://doi.org/10.58557/(ijeh).v5i1.292)
- Saeed Hameed Aldulaimi, Ibrahim A. Abu-AlSondos, Rola Noun, Marwan M. Abdeldayem (2025) Navigating Sustainability: A Comparative Analysis of SDG



Date: 7th May-2025

Performance in the GCC through the Lens of Social Capital Theory. Volume(2025), 166-179. Deleted Journal. doi: <https://doi.org/10.53935/jomw.v2024i4.633>

• Huifei Jiang (2025) The predictive effect of cultural orientations on Chinese gifted students' growth mindsets. Volume(9). Frontiers in Education. doi: <https://doi.org/10.3389/feduc.2024.1493686>

• Nguyen, Minh Doi (2025) Transforming the edge: Socio-spatial governance and migrant place-making in Ho Chi Minh City. doi: <https://core.ac.uk/download/642705034.pdf>

• Boateng, Bernard Ofori, Iqbal, Nasir, Mataruna-Dos Santos, Leonardo, Sergio, et al. (2025) The impact of supply chain management (SCM) on total quality management (TQM) practices in the United Kingdom (UK). doi: <https://core.ac.uk/download/651441056.pdf>

• Yuan Cheng (2025) Levados pelo vento: estudo do Jianghu Big Brother na China. doi: <https://core.ac.uk/download/654359866.pdf>

• N/A (2025) Public Administration for Sustainable Development: Mechanisms and Strategies of State and Regional Administration in the Conditions of War and Reconstruction of Ukraine. doi: <https://core.ac.uk/download/650323295.pdf>

• FIGURE Stephen Kostyo (2023). Community School Approach Reaches High of 60%, Reports Latest Pulse Panel. *Federation of American Scientists*. Retrieved from <https://fas.org/publication/community-school-approach-reaches-high-of-60-reports-latest-pulse-panel/> *Note.* Adapted from Community School Approach Reaches High of 60%, Reports Latest Pulse Panel, by Stephen Kostyo, 2023, Federation of American Scientists. Retrieved from <https://fas.org/publication/community-school-approach-reaches-high-of-60-reports-latest-pulse-panel/>. Great Schools Partnership (2025). The Case for Community Engagement. *Great Schools Partnership*. Retrieved from <https://www.greatschoolspartnership.org/resources/equitable-community-engagement/the-case-for-community-engagement/> *Note.* Adapted from The Case for Community Engagement, by Great Schools Partnership, 2025, Great Schools Partnership. Retrieved from <https://www.greatschoolspartnership.org/resources/equitable-community-engagement/the-case-for-community-engagement/>.

• TABLE Julia Merlin (2021). Parental Involvement in U.S. Public Schools in 2017–18. *U.S. Department of Education*. Retrieved from <https://nces.ed.gov/pubs2021/2021041/index.asp> *Note.* Adapted from Parental Involvement in U.S. Public Schools in 2017–18, by Julia Merlin, 2021, U.S. Department of Education, Data Point. Retrieved from <https://nces.ed.gov/pubs2021/2021041/index.asp>.

• Active Family and Community Engagement in Education [FIGURE]. (2025). Retrieved from <https://communityschools.futureforlearning.org/assets/images/pillar-3-family.png>

• Guiding Principles for Equitable Whole Child Design [FIGURE]. (2025). Retrieved from https://learningpolicyinstitute.org/sites/default/files/styles/100_percent_wide/public/body/CA_Community_Schools_brief_FIG-01.png?itok=boDYHtgJ

